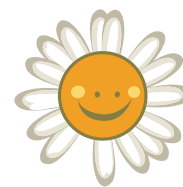




# Daisy Lodge, Cong Construction FAQs



cancer fund  
for children

## 1. When will construction on Daisy Lodge Cong start?

Building of our second Daisy Lodge, therapeutic short break centre will start in July 2025.

## 2. Who are the contractors, and where are they from?

The contractors are Connolly & Fee LTD. They are an award-winning building and civil engineering contractor, with a portfolio of public and private sector projects spanning 49 years. The recently completed construction on Clones Primary Care Centre.

## 3. How long will construction take?

Once started construction will take approximately 18 months.

## 4. How were the contractors appointed?

The contractors were appointed following an extensive public procurement process. This involved a formal process of tendering to ensure fairness, transparency, and value for money.

## 5. What will the build cost?

It will cost approximately €20 million to build and equip Daisy Lodge Cong and we still need to raise €2.5 million.

## 6. How much will it cost to run?

Running costs for the first year are anticipated to be €1.5 million.

## 7. Can we arrange site visits? What is the process?

Site visits will be limited for the first three months until construction is well underway. Site visits will be agreed with our contractor at specific times throughout the contract and will be arranged by an Advisory Committee. No-one will be allowed on site unless the visit has been agreed in advance. Once site visits are permitted they will be limited key stakeholders due to the fact this is a building site and health and safety precautions need to be followed.



**8. Will the entire project be carried out by the contractor, or will they be using local services and materials?**

Connolly and Fee will work with a variety of local and national subcontractors, tradesmen and suppliers.

**9. Will the contractors employ locally?**

Yes.

**10. Where is the best place to direct people to who have questions on the environmental and sustainability elements of the build, such as the protection of the native trees and the waterways on site?**

There are a team of consultants including landscape Architects, Ecologists and Specialist Environmental Consultants working on the project. Dependant on the specifics of the question raised the appropriate consultants will be advised and will respond. Anyone with questions on the environmental and sustainability elements of the build, such as protection of the native trees and waterways on site should in the first instance direct their queries to our architects, d-on Architects Ltd.

**11. When Daisy Lodge Cong is built, how many jobs will it create for the local community?**

A second Daisy Lodge therapeutic short break centre will create approximately 35 full and part time roles spanning hospitality, housekeeping, facilities and administration roles and therapeutic support.

**12. When will recruitment for these roles commence?**

We plan to commence a recruitment campaign in Spring 2026.

