

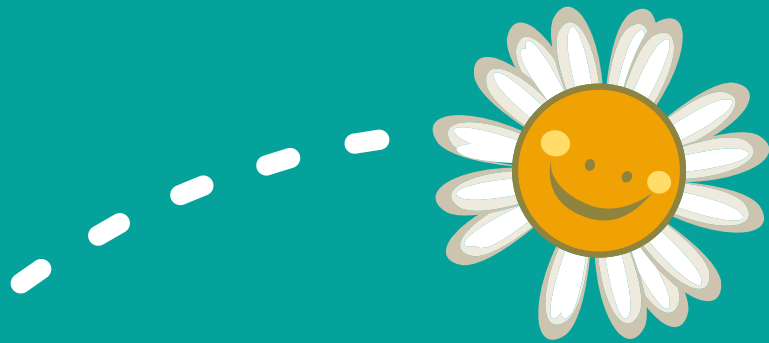
cancer fund
for children

Right Support
Right Time
Right Approach

IMPACT REPORT 22/23

No child should face cancer alone

We want every child (aged 0-24) to have access to the right emotional and therapeutic support to help them cope better with the impact cancer has on their lives.



The Cancer Fund for Children's registered office is Curlew Pavilion, Portside Business Park, Airport Road West, Belfast, BT3 9ED, Northern Ireland. The Cancer Fund for Children is a company limited by guarantee not having a share capital. Registered with the Charity Commission for NI NIC100532, HMRC tax number XR29768, Companies House NI049930.

The Cancer Fund for Children Ireland's registered office is 38 Upper Mount Street, Dublin, D02 PR89, Republic of Ireland. The Cancer Fund for Children Ireland is a company limited by guarantee not having a share capital. Registered Charity in Ireland 20142681, Charity tax number CHY 21682, Companies Registration Office 590462.



CEO Welcome

Welcome to our 2022/2023 Impact Report

We understand that the journey through cancer is a daunting one, filled with uncertainty and fear. But we also know that with the right support and network, families can feel connected, empowered and strengthened to face whatever lies ahead.

Over the past year Cancer Fund for Children's team has risen to unforeseen challenges. The global pandemic continued to bring some uncertainty, impacting the lives of countless families already facing the heavy burden of cancer. Despite this our team responded to increased referrals with agility and determination, recognising the urgent need to provide support to children, young people and families impacted by cancer.

It is testament to the relentless drive and unwavering compassion of our entire team, from our tireless staff to our dedicated volunteers, that we remain on course to deliver our five-year strategy.

In March 2022, we recruited our first Cancer Support Specialist based on the paediatric cancer ward at Children's Health Ireland,

Crumlin in Dublin. This role which is in partnership with the Katie Nugent Fund, provides informal social and emotional support to families during their child's treatment.

We continued to work with the Katie Nugent Fund throughout the year to establish a new community support service which will help us ensure all children and young people diagnosed with cancer living across the island of Ireland have access to the right support, at the right time, regardless of where they live.

The key pillars of our strategy are:

- ongoing improvement of our services
- growth of our youth engagement programme
- continued development of services across the island of Ireland
- developing our people and culture
- financial sustainability and good governance
- increased awareness of our work



I would also like to acknowledge the exceptional efforts of our voluntary Board of Trustees. Their strategic guidance and drive have been instrumental in helping us develop our services for children diagnosed with cancer across the island of Ireland.

Once again, our supporters have gone the extra mile to help Cancer Fund for Children. I would like to take this opportunity to say a huge thanks to all the people, clubs, schools, businesses, corporate partners, teams and families who have given so generously of their time, skills and fundraising. We are incredibly lucky to have such a strong community of support. Together I am confident we will be able to deliver on our mission to help ensure that no child has to face cancer alone.

Enjoy reading,

Phil Alexander, CEO



Year in Numbers 22/23

Our support connects and strengthens children, young people and their families so they feel empowered to cope better with the emotional impact of cancer.



324

new family referrals
(30% increase from
previous year)



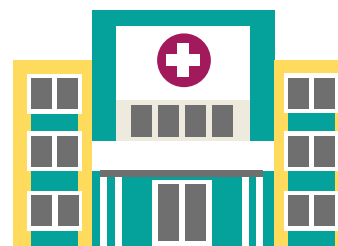
800

**families supported
across the
island of Ireland**



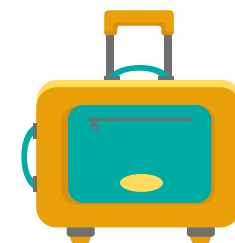
1,147

**individual support
sessions delivered
to young people
in Northern Ireland**



240

**individual support
sessions delivered in
Children's Health Ireland
at Crumlin, Dublin**



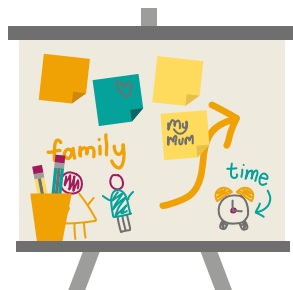
452

**families supported
at our therapeutic
short break centre,
Daisy Lodge**



38

**bereaved families
benefited from
self-catering
weekends together**



659

**family workshops
delivered in
Daisy Lodge**



180

**young people
benefited from
residential
group support**



1,000+

**complementary
therapies
provided**



None of this
would have been
possible without the
continued generosity
and kindness of our
corporate partners,
community supporters
and funders.

Support in the Community

Our support meets children, young people and families with sensitivity, warmth, compassion and flexibility. It is focused on building connections, relationships, trust and rapport as we strive to ensure that we can provide the support needed. It takes place on a one to one basis, when and where children and young people most need it and is at the heart of our direct support for young people.

Parental, palliative family-based support and bereavement support have seen the team deliver a range of individual support, specialist sessions and bespoke groupwork (both in-person and online). This year we introduced parental support coffee

mornings and bereaved coffee mornings, an opportunity for parents to meet and connect with others in a similar situation. We also conducted a study into parental anxiety and how it is impacted by cancer. The research findings validate the need for ongoing therapeutic support and peer support opportunities for parents and carers. Continuous investment in research and the diversity of our support helps inform the development of Cancer Fund for Children's services, ensuring families receive a holistic experience whilst allowing our team to think, reflect and learn.



Residential Groupwork

This year our residential groupwork programmes were back in full swing with 180 young people participating in programmes at our Narnia log Cabin



designed to empower young people while promoting peer connection and reducing loneliness. Young people supported by Cancer Fund for Children also had the opportunity to complete

their Bronze Duke of Edinburgh's/Gaise - President's Award. We collaborated with stakeholders to provide a range of opportunities for diagnosed teenagers to avail of UK wide residentials, sailing trips and conferences all designed to help build confidence, and relationships.

Throughout the year families continued to take part in our Care Free Choir; an opportunity relax, build relationships and share experiences.



“

Our amazing specialist, Hannah visits our home regularly and has helped Annabel so much with managing her fears and anxieties. Annabel feels so comfortable with Hannah. She is such a ray of sunshine coming in to our home and has given us so much support as a family.

”



Annabel during an individual support session with her Cancer Support Specialist Hannah

Therapeutic Short Breaks



Family Feedback Following a Short Break

94% felt better able to manage their situation

91% said time together strengthened their relationship

90% felt more hopeful about the future

We have continued to develop our therapeutic short break service at Daisy Lodge in Newcastle Co. Down to ensure families continue to receive the right support, at the right time. Throughout the year our team have worked tirelessly to ensure families have felt safe, and have enhanced our mid-week break offering by introducing rest and relaxation overnights for parents and carers.

1,935 children and their parent/carers had the opportunity to rest, recharge and spend time together away from hospital and home life at Daisy Lodge. This is a 15% increase from the previous year.



During their short break families took part in group sessions which encouraged participants to reflect, connect with others living through cancer and manage stress better. In total our team of Cancer Support Specialists based in Daisy Lodge delivered **659 workshops** for families and individuals and our Complementary Therapy Team provided over **1,000 therapies**.



Daisy Lodge, Co. Mayo

With our short break service in Newcastle, Co. Down at full capacity and a waiting list in place we are delighted that work has started to clear the site of our second therapeutic centre before construction commences in 2024. Under the supervision of an archaeologist and ecologist a sub-base has been laid for a new access road, car park and footprint of the building. The site which is on the shores of Lough Corrib, outside Cong Village has also been cleared to allow for a play area.

“

We had an amazing few days being able to relax and step away from all the hard times and stress that a cancer diagnosis brings. It's like being able to step away into a different world, a truly magical experience.

”



Hospital Based Support

In March 2022, we recruited our first Cancer Support Specialist based on the paediatric cancer ward at Children's Health Ireland, Crumlin in Dublin. This role, which is funded in partnership with the Katie Nugent Fund, provides informal social and emotional support to families during their child's cancer treatment. Over 240 support sessions have now been provided to families experiencing childhood cancer.

Our work with teenagers and young adults in hospitals across Northern Ireland took a major step forward this year. Following the introduction of a regional ward based Cancer Support Specialist last year, we introduced a Belfast based Cancer Support Specialist as part of the Teenager and Young Adult (TYA) Service. We now provide much needed age-specific support in all hospital settings, being there for young people and young adults when they need us most.



"Kim, who works for Cancer Fund for Children was a great ally and support during this period. She provided a shoulder to cry on, a listening ear and much needed advice on the huge amount of bureaucracy that we needed to handle in relation to Sophie's treatment, my absence from work etc."

Martina, mum of 8 year old Sophie who was diagnosed with leukaemia



"Last year, I met this wonderful lady called Lucy. She is one of the Cancer Support Specialists from Cancer Fund for Children. She never fails to brighten up the room! Now every time I come down to the Bridgewater Suite for a check-up (which can take hours) I don't have to worry about being bored because Lucy always has something for me to do. Recently we got creative through art therapy and even a little competitive with board games. We always have so much fun and Lucy always manages to put a smile on my face."

Wiktorija, 19 who was first diagnosed with leukaemia age 10



“

Cancer Fund for Children has supported me in so many ways. They helped to change the way I felt about my cancer. At the start I felt morbid, and everything felt horrible and grey.

When I was introduced to my Cancer Support Specialist, Helen she helped turn everything I saw as a negative into a positive. She looked for the bright side of what was happening and that was something I had really struggled to do.

”

Danni with her Cancer
Support Specialist Helen

Youth Engagement

Ensuring the voices of children and young people are at the heart of our charity is a big priority for Cancer Fund for Children. They have an important role to play in advocating for their peers and championing change across cancer services.

Following the successful development of our Youth Engagement Strategy last year, this year the real work began in supporting young people to have a real and lasting voice. We recruited two new Youth Engagement Groups for young people aged 8-11 and 12-17 and, following a period of induction, these young people have represented Cancer Fund for Children at events, meetings and residential. They have been involved in fundraising, worked together to plan for a 'Young People's Celebration Event', sat on interview panels and carried out the first youth-led review of our services.

"I feel I am listened to, I have made some amazing friends, I have opportunities, I always have fun and I know I am seen and heard. More of our work we do is focused on others impacted with cancer. I like it quite a lot."

Youth Engagement Group member



Young Ambassadors

We also launched opportunities for young people who have been supported by Cancer Fund for Children to become our Young Ambassadors. Training was provided to four young people who now use their experiences to help educate and raise awareness of the impact of cancer and the vital services we provide.

Peer Facilitators

We recruited two new Peer Facilitators to support our youth engagement. Both Peer Facilitators, who are former service users work directly with children and young people and their employment has been made possible with thanks to funding from the Department of Communities and the Rank Foundation.



"I work with a selected group of young people called 'The Youth Engagement Group' (a bit like a school council) who come together to have their voices heard, help make decisions, and raise awareness and create change on issues relating to the impact of cancer on children and young people. I do this through arranging group days or residential for the young people to get together to discuss their thoughts and ideas, and then with my team we try to help make these ideas or changes happen within the charity."

Zoe Gilmore, Peer Facilitator



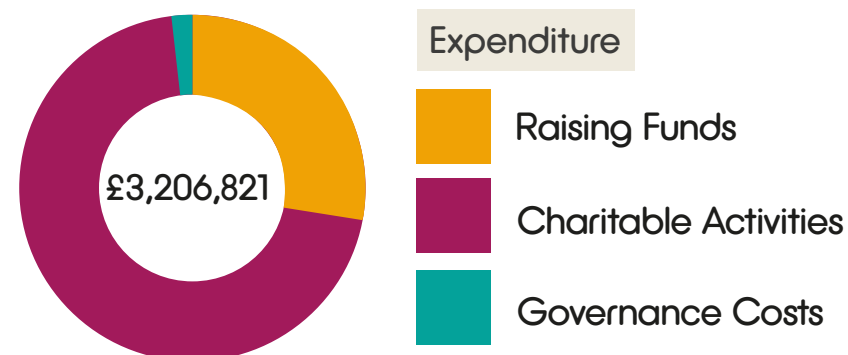
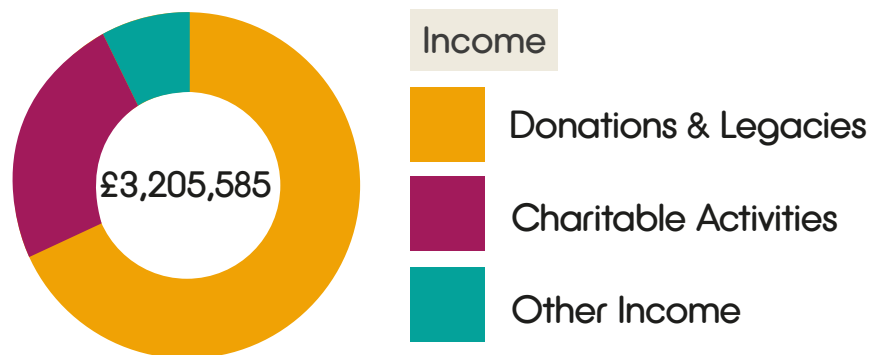
Income Generation



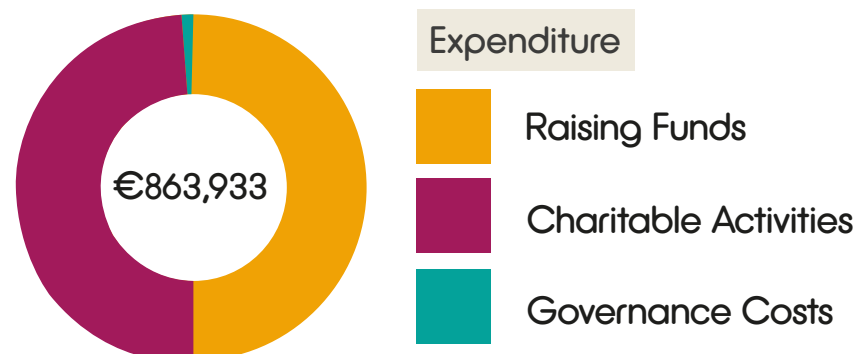
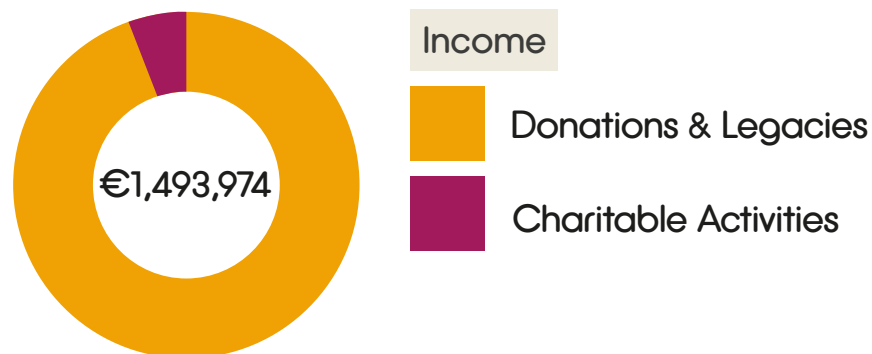
We would like to take this opportunity to say a massive THANK YOU to our fundraising stars, our corporate partners, schools and community groups, families, funders and committed givers for their generosity, kindness and continued support. You help us ensure that no child or young person has to face cancer alone.

Financial Performance

Cancer Fund for Children



Cancer Fund for Children Ireland



We would like to thank our funders for helping us ensure we can be here to support children, young people and families impacted by cancer.

- ARN Foundation
- Children in Need
- The Community Foundation NI

- The Coop Foundation
- The Ireland Funds
- The Katie Nugent Fund

- The National Lottery Community Fund
- The Rank Foundation
- Ulster Garden Villages

Communications & Awareness

As we develop our services across the island of Ireland, raising awareness is more important than ever, serving as a way for us to communicate our impact to new and existing supporters.



Social Media



Followers: **21.1K**
Reach: **469k** (+59.6% on 21/22)



Followers: **5.6K**
Reach: **62k** (+139.6% on 21/22)



Followers: **6.3K followers**
Reach: **64.4k impressions**



Followers: **2.7K**
Reach: **82.4k impressions**

Website



62k users

(+44% on previous year)

90k sessions

(+57.8% on previous year)

Photo highlights

16-year-old Alex addressed a meeting of the Dáil on behalf of Cancer Fund for Children.

Young people open our new Narnia Garden which was funded by The National Lottery Community Fund and undertaken in partnership with the NI Prison Service.

Dublin born Manchester City Coach Jamie Carr completed a solo 3,000-mile row across the Atlantic Ocean to support children and young people impacted by cancer.

PR and Media



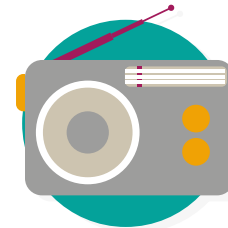
382

print articles
13.6 million reach



253

online articles
6.9 million reach



13

**radio interviews/
mentions**
598K reach



Plans for the Future

Cancer Fund for Children's Board of Trustees launched our 2021-26 strategic plan for the next five years.

The six pillars of our plan are:



1

Ensure that all children impacted by cancer across the island of Ireland have access to our services and that they receive the right emotional and therapeutic support to help them cope better with cancer.



4

Build a more sustainable and financially resilient organisation by diversifying our fundraising and developing and nurturing lasting relationships with our supporters so they are with us now and in the future.



2

Build and open our second therapeutic short break centre, Daisy Lodge in Cong, Co. Mayo, allowing more families to access therapeutic short breaks regardless of where they live in Ireland.



5

Grow and nurture a positive and inclusive culture where our staff, supporters, and service users feel valued, supported, and listened to.



3

Ensure that children and young people are at the heart of our organisation and are an active voice in championing change across cancer services.



6

Demonstrate the impact and value of our vital services, whilst raising awareness of Cancer Fund for Children across the island of Ireland.



Ben with his Cancer
Support Specialist Gill

Contact us

For general enquiries, please get in touch with our team today:



028 9080 5599
01 562 1580



info@cancerfundforchildren.com



Curlew Pavilion
Portside Business Park
Airport Road West
Belfast, BT3 9ED
Northern Ireland

38 Upper Mount Street
Dublin
D02 PR89
Republic of Ireland



@CancerFundChildren



@cancerfundforchildren



@CancerFundChild



Registered with
FUNDRAISING
REGULATOR



CHARITIES
INSTITUTE
IRELAND

Registered charity in Northern Ireland:
Charity number NIC100532, HMRC Tax Number XR29768.

Registered Charity in the Republic of Ireland:
Charity number 20142681, Charity Tax Number CHY 21682.