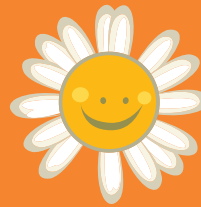


Volunteer Role

Complementary Therapist



cancer fund
for children

What is the purpose of the role?

To provide Complementary Therapies to Service Users who are availing of a short break at Daisy Lodge.

Location

Shimna Valley Complex, 124a Bryansford Road, Newcastle, Co Down, BT330PP.

Your Commitment

Cancer Fund for Children are looking Complementary Therapists who can volunteer one or two mornings/ afternoons/evening midweek or at weekends on a monthly basis.

What does it involve?

- Meet with the Service user to discuss treatments.
- Offer a range of Complementary Therapies to include massage, aromatherapy or reflexology.
- Provide treatments to cancer patients.
- Maintain high standards.
- Prepare room for the session and tidying up afterwards.
- Maintain appropriate records and undertake consultation with all service users.

What skills or experience do I need?

Cancer Fund for Children is looking for warm, friendly, enthusiastic volunteers with a recognised qualification in Massage, Aromatherapy or Reflexology. Key skills include:

- Ability to offer a holistic approach to therapies.
- A compassionate, caring and sensitive attitude to service users.
- Strong interpersonal and communication skills.
- Be able to work within professional boundaries.
- Offer a high standard of treatment and care to Service Users.

What can I expect from the role?

- You will receive ongoing support and training relevant to the post.
- You will gain experience of working directly with families associated with Cancer Fund for Children.
- An opportunity to work as part of the Daisy Lodge team and meet new people.

For an informal chat about this role please contact:

Phil Alexander
Shimna Valley Complex Manager
T: 028 4372 4212
E: phil@cancerfundforchildren.com

We look
forward to
hearing from
you!